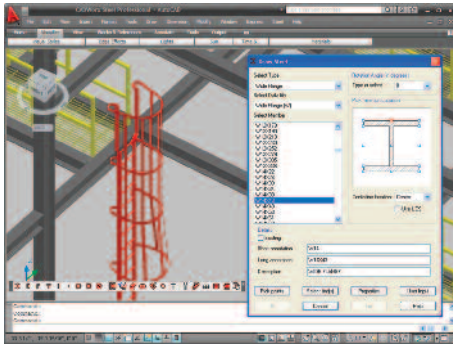


**EDITIONS:**

**CADWorx Steel  
Professional Plus**

**CADWorx Steel  
Professional**

**CADWorx Steel**



*CADWorx Steel is capable of creating steel structures with impressive complexity and refreshing ease.*

**Professional Plus Edition:**

- Intelligent 3D Steel Modeling
- International Steel Libraries
- Frame Creation
- User Shapes
- Live Database Links
- Bills of Material
- Links to Analysis
- Stairs, Ladders and Hand Railings
- Annotation Linked to 3D Model
- 2D Output Linked to 3D Model

**Professional Edition:**

*(included exclusively with CADWorx Plant Professional)*

- Intelligent 3D Steel Modeling
- International Steel Libraries
- Frame Creation
- User Shapes
- Live Database Links
- Bills of Material
- Links to Analysis
- Stairs, Ladders and Hand Railings
- Intelligent Annotation
- Intelligent 2D Output

**Standard Edition:**

- Intelligent 3D Steel Modeling
- International Steel Libraries
- Frame Creation
- User Shapes
- Database Output
- Bills of Material
- Links to Analysis
- Intelligent Annotation
- Intelligent 2D Output

**COADE, Inc.**

12777 Jones Road, Suite 480  
Houston, Texas 77070 USA

Phone: +1 281-890-4566  
Fax: +1 281-890-3301  
US Toll Free: 1 800-899-8787  
E-mail: sales@coade.com  
Web: www.coade.com

**COADE CADWorx Steel is a 3D steel modeling package that comes complete with powerful design and annotation tools and international steel shapes. With CADWorx Steel, structural designers have access to the best structural tools on the market.**

**Comprehensive Steel Libraries**

CADWorx Steel has a full library of international steel shapes in both imperial and metric units. Metric or imperial shapes can be placed in either environment without modifying their underlying data files.

**Frame and View Creation**

CADWorx Steel makes the creation of complex 3D steel structures simple. Multi-level frames with vertical or sloped sides can be combined to create intricate layouts that allow the easy placement of steel members by the picking of single or multiple frame lines.

**User Shapes and Customization**

CADWorx Steel allows structural designers and engineers to create user shapes that can be made up of plates or derived from any extruded profile.

**Editing and Modification**

CADWorx Steel members are intelligent, so they are easily modified. Functionality also exists that allows the automatic coping of members against one another. Members can be cut, trimmed and also joined to other members—allowing design modifications without remodeling.

**Database Links**

CADWorx Steel outputs to popular database formats and has full auditing capabilities, ensuring model and database are kept in synch.

**Reports and Bills of Material**

Center-of-gravity calculations are automatically created and can be shown on-screen, in drawings or in detailed reports. User-configurable bills of material are available directly from the model or from the external database.

**Links to Analysis**

CADWorx Steel allows links to structural and piping analysis packages.

**Stairs, Ladders and Hand Rails**

CADWorx Steel includes routines for the parametric creation of stairs, ladders (both caged and un-caged) and hand railings. Any attribute of these items can be modified at any time—instantly updating the model.

**Annotation and 2D Output**

CADWorx Steel automatically creates a view for each elevation, column or row in the model. Built-in routines can also automatically dimension, annotate and represent views in double or single line.

**Technical Specs**

- AutoCAD compatible
- Microsoft Windows XP Pro or Windows Vista Ultimate (minimum)

**Application Areas**

Process and Plant Design, Piping, Equipment, Steelwork, Petrochemical, Chemical, Power, Offshore, Food, Beverage, Brewing, Pharmaceutical, Water Treatment, Building Services, Shipbuilding and Architectural.

©2009 COADE, Inc. All Rights Reserved.  
COADE and CADWorx are registered trademarks or trademarks of COADE, Inc.  
AutoCAD is a registered trademark of Autodesk, Inc. Windows and Vista are trademarks of Microsoft Corporation.