

Leica Geosystems Release Notes

Product Leica CloudWorx 2020 for AutoCAD
Date 18 March 2020
From HDS Software Product Management

Contents

WHAT'S NEW	2
New Setup icons	2
TruSpace support for Snapshots and Markups	2
Support for Silhouette mode	4
Join pipes with elbows	5
New flange catalog support	6
BUG FIXES	9
UX Bugs	9
LEICA CLOUDWORX 2020 COMPATIBILITY AND UPGRADES	9
Upgrading to Leica CloudWorx 2020 for AutoCAD from Leica CloudWorx 6.5.x for AutoCAD	9
Compatibility with Leica CloudWorx 2020 for AutoCAD AND AutoCAD Versions	10
Compatibility with JetStream Enterprise	10
Compatibility with CloudWorx Ultimate	10
Deprecated Features	10
KNOWN ISSUES	10
Installing CLM while JetStream service is running	10
Modified Usage for Asian Languages	11
Switching JetStream server with JetStream project open	11
Equivalent user permissions requirement	11
Temporary ModelSpace	11
LGS usage over network	11
LICENSING	11

What's New

This is a major release including new fitters and major improvements to TruSpace. Users should reference the below section on licensing for notes about CCP requirements.

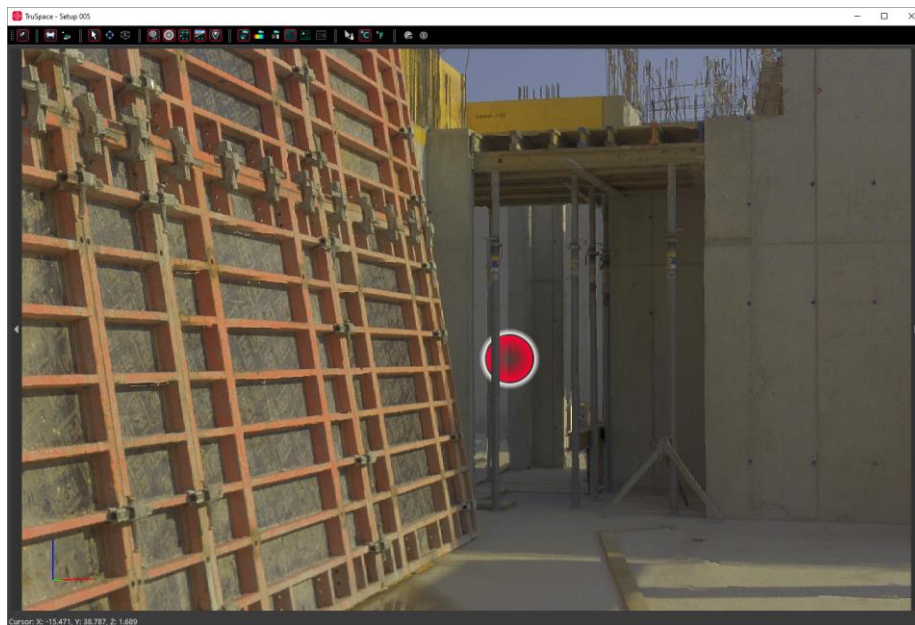
TruSpace Improvements

New Setup icons

The look of Setup position icons has been modernized across the Laser Scanning Software portfolio in keeping with the streamlined UI of the next-generation products. Yellow 3D tetrahedron and 2D triangle Setup markers have been replaced with red spheres and circles respectively. All scanner data imported into Cyclone 2020 will display spheres when the IMP is accessed by CloudWorx.

Due to the previous rendering behavior, old LGS files or JetStream Enterprise projects published from Cyclone 9.4.2 or earlier or the Cyclone REGISTER 360 family 1.6.2 or earlier and/or stored in JetStream Enterprise 1.6.2 or earlier or accessed as IMP in Cyclone 9.4.2 or earlier will still display triangles in TruSpace. Re-publish data from the Cyclone family of 2020 products for the updated sphere Setup icons.

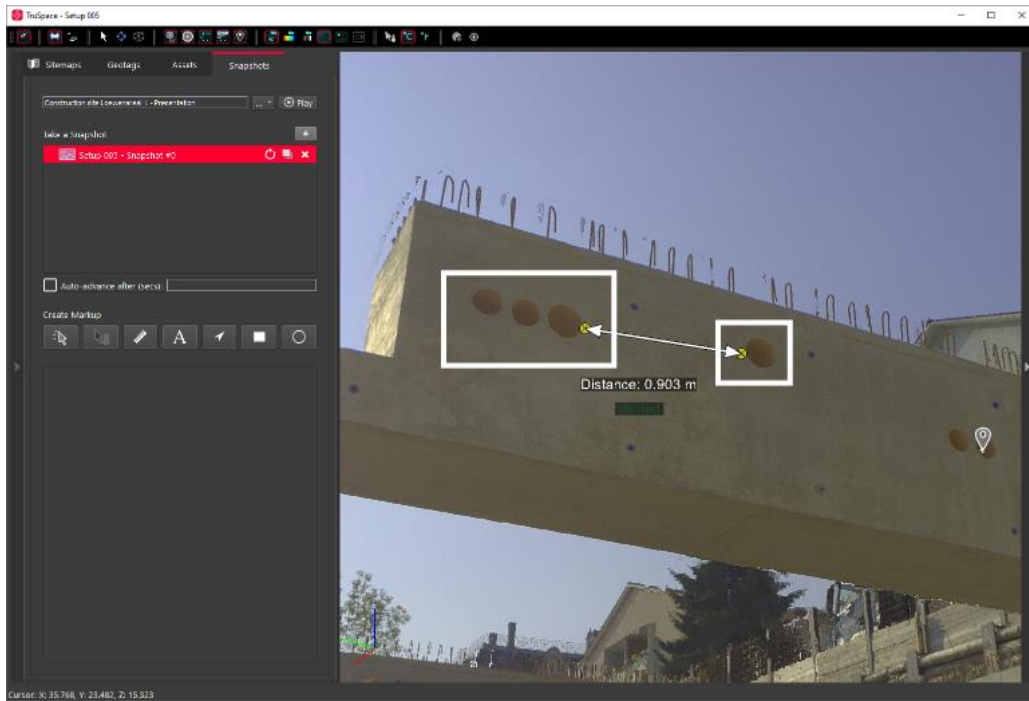
The new sphere Setup marker will also appear in the 2020 versions of Cyclone, the Cyclone REGISTER 360 Family, JetStream Viewer, and TruView Enterprise and Cloud.



TruSpace support for Snapshots and Markups

Users can now view and create Snapshots and their associated Markups in the TruSpace window in order to support the seamless viewing of all project information throughout the reality capture software toolchain.

To access Snapshots and Markups, simply open the left property panel and click on the **Snapshots** tab and add Markups as usual.



Snapshots and Markups created when connected to JetStream Enterprise 2020 or later will be instantly saved back to the project on the server. When working with an LGS file, Snapshots and Markups are temporary and will be lost when a project is closed.

GeoTag preview on hover

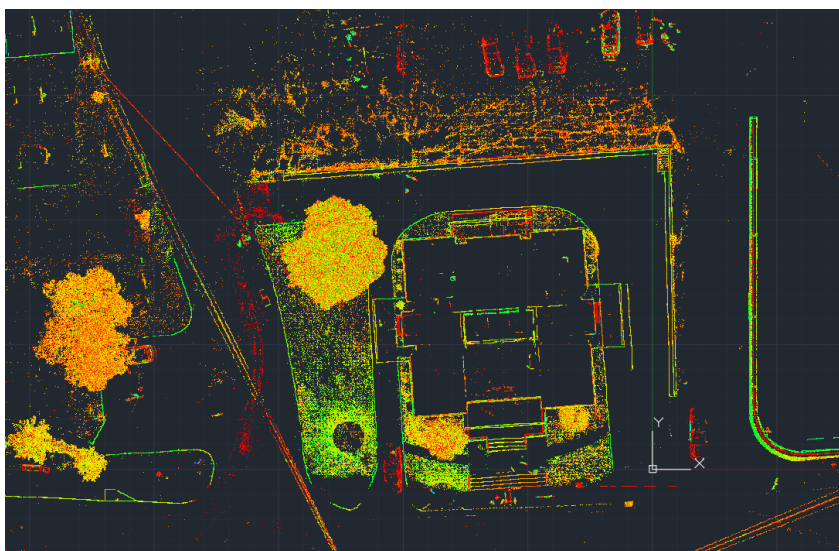
When viewing GeoTags within TruSpace, a preview of the GeoTag contents now appears upon hovering on the GeoTag. When the GeoTag contains an image, the image preview will be displayed.



Support for Silhouette mode

With the release of CloudWorx 2020 for AutoCAD, point clouds can now be rendered in silhouette mode. Silhouette mode exaggerates contrast which can make certain operations, like tracing, easier.

Silhouette rendering mode requires the point cloud to have been published from Cyclone as an LGS file or JetStream project or opened with ModelSpace View from Cyclone 2020 or later. Projects originating from Cyclone REGISTER 360 data do not support Silhouette mode at this time.



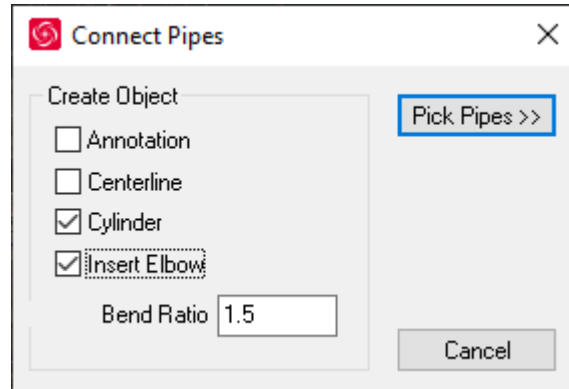
Join pipes with elbows

Users can now join two pipes with an elbow to create a more realistic connection between pipes.

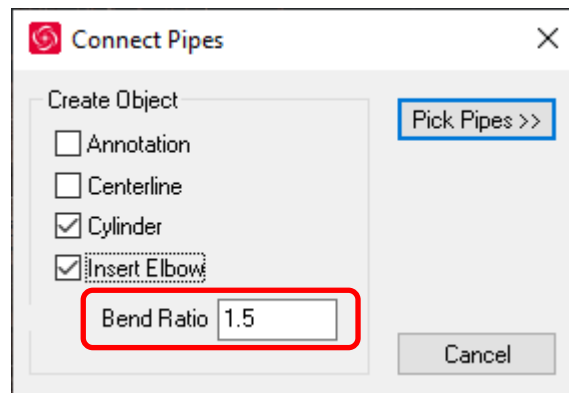
Joints are not fit to the real-world elbows, rather the user defines the parameters for the joint including the two pipes being joined, and an object of those parameters is created based on user specifications.

To join two pipes:

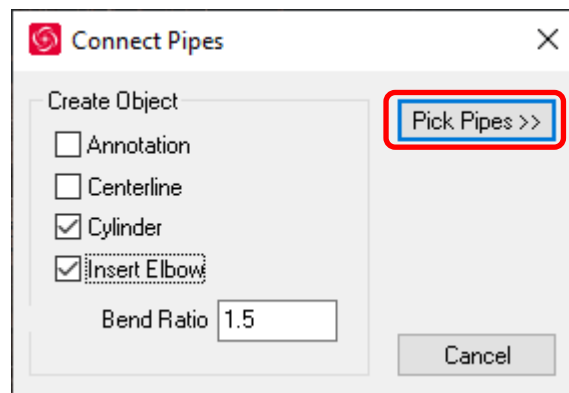
1. Click **Connect**
2. Click **Insert Elbow**



3. Select the desired bend ratio

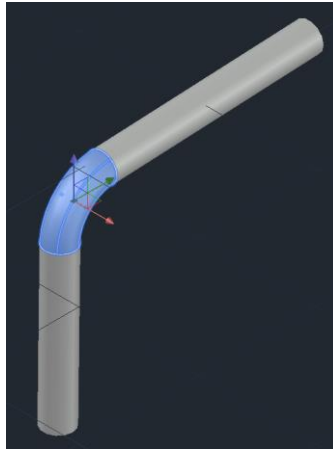


4. Select **Pick Pipes**



5. Click on the pipes to be joined, and then hit **Enter**.

- An elbow will be created using the user-defined start and end points (the terminus of the adjacent pipes) and the ratio specified.



A run of pipes can be joined with elbows, but the ratio setting will apply to all joints created.

New flange catalog support

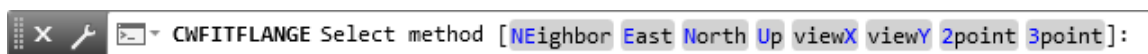
When fitting a flange, the user can now select a flange type and size from a catalog to allow simple creation of these common objects without potential human error.

The CloudWorx for AutoCAD flange catalog matches the Cyclone flange catalog.

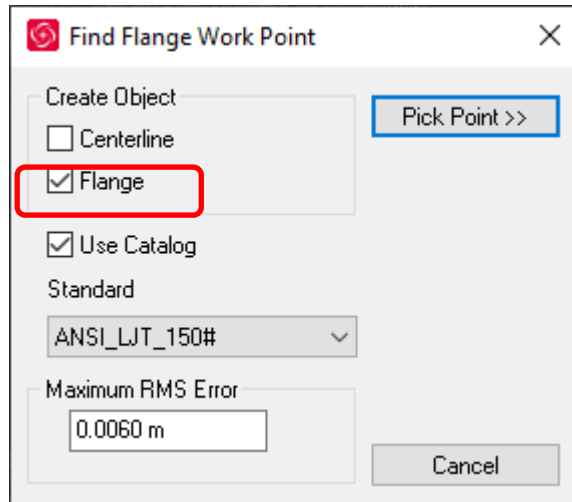
To fit a flange:

1. Select **Flange** from the Fitters section
2. Choose the selection method
 - a. -Neighboring
 - b. East
 - c. North
 - d. Up
 - e. ViewX
 - f. ViewY
 - g. 2point
 - h. 3point

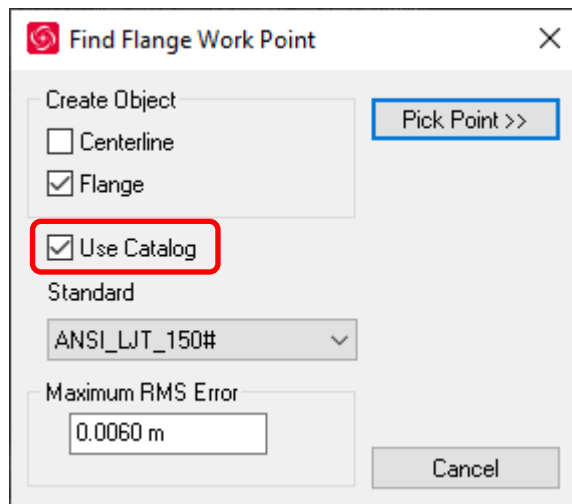
Or use the command line:



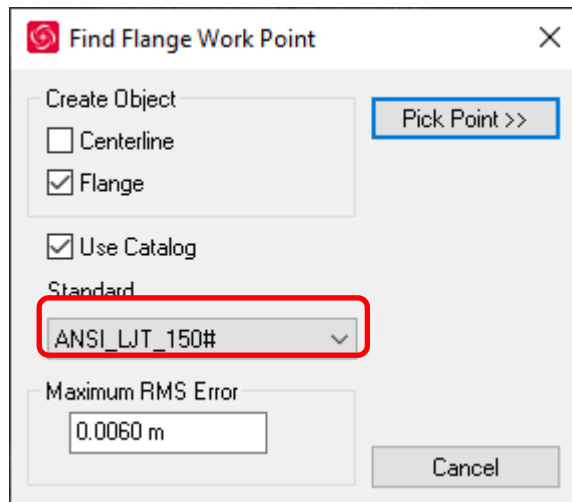
3. Select **Flange**



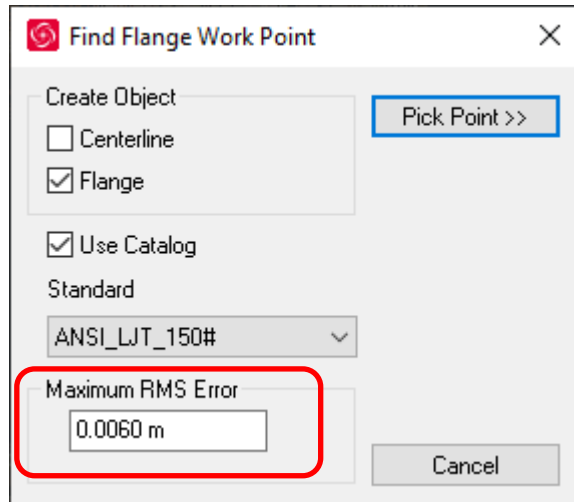
4. Select **Use Catalog** if you wish to leverage the flange catalog for fitting.



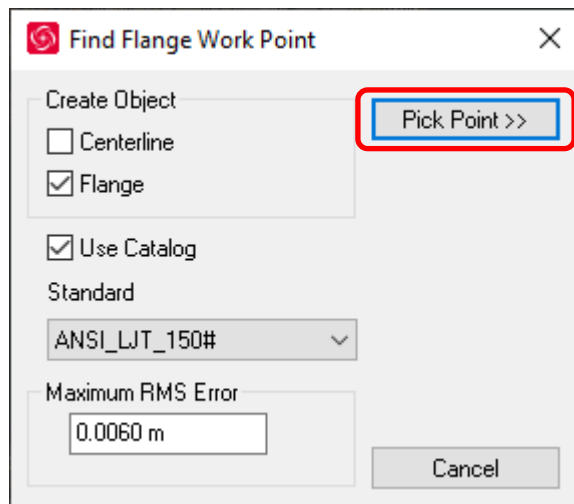
5. Select the appropriate Catalog from the drop-down menu



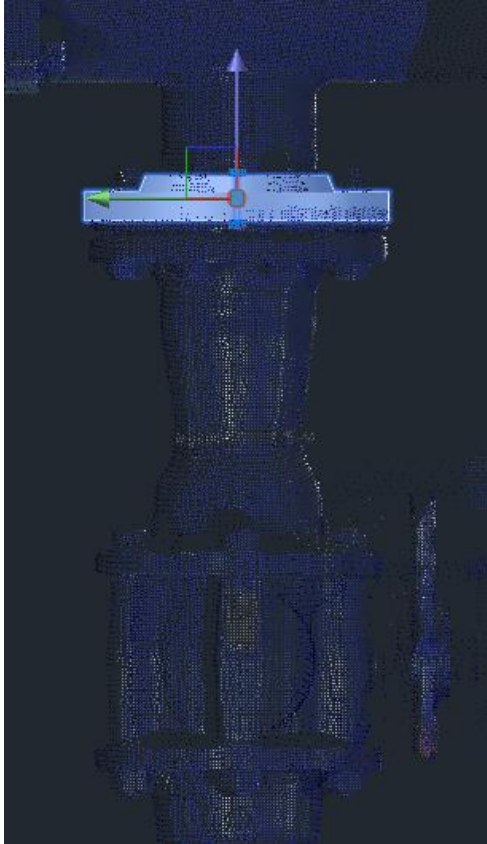
6. Set the maximum allowable error.



7. Select **Pick Point**



8. Select the flange in the CAD window or TruSpace and the flange will be placed.



Bug Fixes

UX Bugs

- Corrected a bug which caused UCSs to be ignored in favor of the AutoCAD WCS when generating an elevation color map.
- Corrected a bug resulting in scaling inconsistencies between orthoimages from Cyclone ModelSpace Views vs LGS files.
- Improved warning and error messages.
- Corrected a bug which could result in the elevation color mapping changing relative to the zoom level when working with LGS files; not present in IMP or JetStream projects.
- Corrected a bug which could result in floor flatness being computed on both hidden and visible points.
- Corrected a bug which caused CloudWorx not to respect the user's OS language in certain operations.
- Improved accuracy of point cloud snapping.
- Improved stability of point rendering when using ModelSpace.

Leica CloudWorx 2020 Compatibility and Upgrades

Upgrading to Leica CloudWorx 2020 for AutoCAD from Leica CloudWorx 6.5.x for AutoCAD

You must have Administrator-level privileges on your workstation to correctly install Leica CloudWorx software.

If using IMP data, first run the current Cyclone installer if you do not have a version of Cyclone installed. Otherwise/Next run the CloudWorx 2020 installer and follow the directions to proceed with the installation. Please heed the warning message about compatibility of earlier version databases. We strongly recommend that users not use the “Repair” option when upgrading. Rather, users should select “Remove” when it appears and then run the installer again to install the new version.

Compatibility with Leica CloudWorx 2020 for AutoCAD AND AutoCAD Versions

CloudWorx 2020 for AutoCAD officially supports Autodesk AutoCAD versions 2015-2020.

Compatibility with JetStream Enterprise

CloudWorx 2020 for AutoCAD is compatible with JetStream Enterprise 1.3 and higher. To access the latest features, it is recommended that users update to the latest release of JetStream Enterprise 2020.

Compatibility with CloudWorx Ultimate

CloudWorx 6.3.1 (or later) for AutoCAD is compatible with the CloudWorx Ultimate License.

Deprecated Features

Leica Geosystems strives to provide support for the widest array of operating systems and file formats possible as is reasonable given current technologies and support from third-party partners. With each release, we review our list of currently supported formats and operating systems in line with industry trends and announced product terminations.

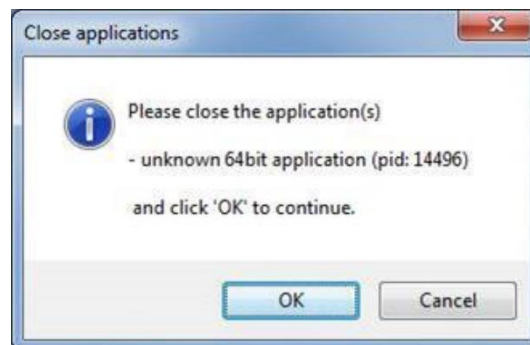
Leica Geosystems may add or terminate support for a file format during any release. Obsolete operating systems will be supported for six months after their announced termination or the next major software release, whichever comes first. Server products will be supported in alignment with Leica’s Client License Manager (CLM) supported servers to guard users against incompatibility.

Please reference the Leica Geosystems Deprecated Features policy for a complete listing of discontinued features, formats and operating systems.

Known Issues

Installing CLM while JetStream service is running

During installation of CLM, users may encounter the following error message. This is commonly due to a service like JetStream running in the background.



10/11

To enable the successful installation of CLM, please follow these steps:

- Launch the task manager
- Select the Services tab
- Look up the process with the PID (Process ID) shown in the Close applications dialog
- In this case it is JetStream
- Terminate the process so that CLM can be installed
- After CLM is installed, click on the Services button in the Task Manager and restart the service

Modified Usage for Asian Languages

Some actions and windows do not execute properly when operating CloudWorx in an Asian language.

Switching JetStream server with JetStream project open

CloudWorx does not support switching JetStream servers while a JetStream project is open. Upon attempting this action, the user will receive a message which states, "You already have a CloudWorx project open." Users should close the active project before switching JetStream servers.

Equivalent user permissions requirement

When working with IMP data, AutoCAD must be run with the same level of user privileges as Cyclone was originally configured with. Meaning if Cyclone is configured to Run As Administrator, then AutoCAD should be Run As Administrator to connect to Cyclone and open an IMP.

Temporary ModelSpace

When working with IMP data, users may see a temporary ModelSpace created within Cyclone to support rendering in CloudWorx. All ModelSpace views are temporary and will not be permanently added to a project. It is not a requirement that Cyclone be running while using CloudWorx.

LGS usage over network

The use of LGS files is only officially supported when the files are saved locally. Due to variations between network deployments LGS files may be unreliable when hosted in a network location.

Licensing

All users with valid CCP, or with CCP valid as late as 25 January 2020, can run this new version with no new license required.