

**PLANTMO is a software application anyone can use to leverage a Intergraph CADWorx® PLANT database for project needs. It has utilities that enable:**

### Viewing and Extracting Material Take-Offs

PLANTMO has a Grid Manager to completely control how component data is displayed. Users can customize views to meet their viewing and extraction requirements. Excel style filters are available so users can reduce the selection set to their exacting needs before exporting to Excel.

- Individual Item Listing
- Automatically totals Item requirements
- Automatically totals Pipe requirements
- Automatically totals by Line Number, SPEC, etc...

### Reporting Design Quality and Status

PLANTMO provides a real-time assessment of 3D modeling status and quality against associated P&ID drawings using the P&ID database or an Excel Line List.

### Costing Projects Real-time with Design

PLANTMO monitors project cost real-time by tracking component pricing in a Global Pricing Catalog. The pricing catalog easily imports Excel spreadsheets created by any Enterprise Resource Planning (ERP) system, or supplied by material vendors. PLANTMO will update the pricing of every item in a CADWorx model and display totals on any Material Take-Off.

### Updating CADWorx Part Numbers

PLANTMO enables Part Number (DB\_CODE) updates in the Model based on a Long Description or Long Description/Size Match. This functionality negates the need to maintain Part Numbers in separate (db.dat) text files. Now it is possible to automatically update a part number based upon a manufacturer, vendor, or enterprise system change for any component.

### Requisitioning Materials Pre-Design

PLANTMO creates and stores material requisitions that can be used to help get materials purchased before any CAD Design begins.

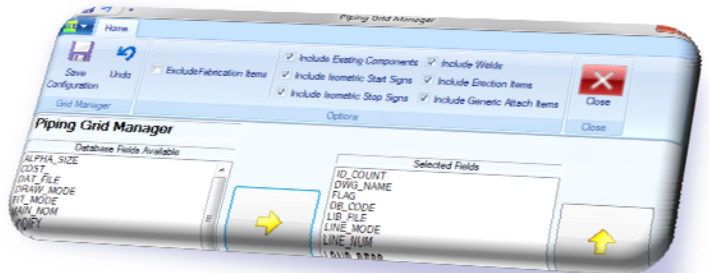
### Requisition Management

PLANTMO provides a way for project managers and engineers to create and otherwise track requisitions against projects. At any point during a project PLANTMO will compare what has been requisitioned against what is required according to CADWorx Models. This discrepancy reporting system provides the Material Controls necessary during an entire project life cycle.

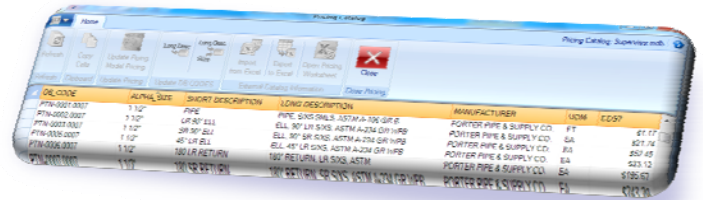
### Piping and Steel Grid Interfaces



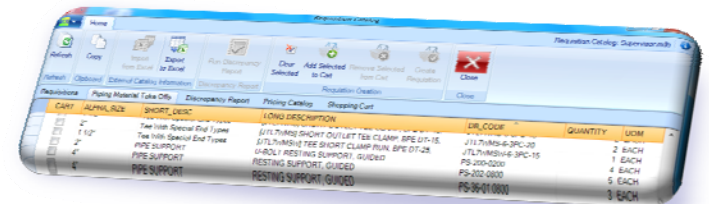
### Grid Manager



### Pricing Catalog



### Requisition Catalog



### Design Quality and Status Reporting

